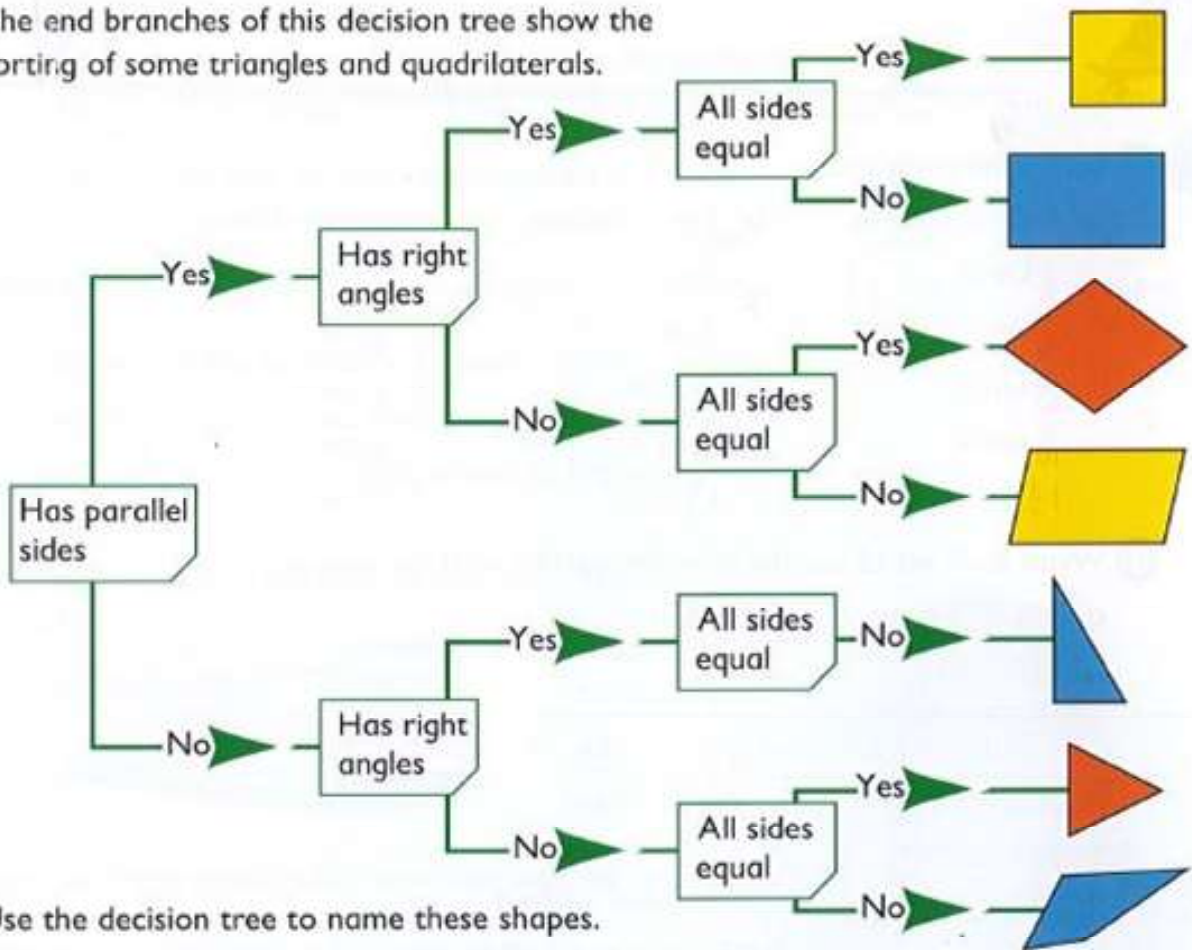


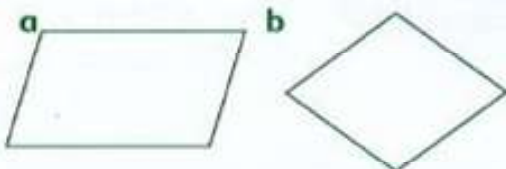
The end branches of this decision tree show the sorting of some triangles and quadrilaterals.



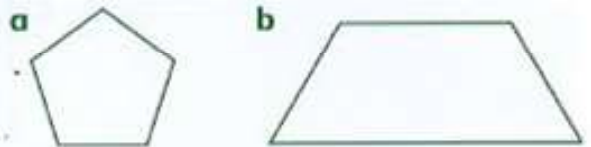
1 Use the decision tree to name these shapes.

- a It has parallel sides. It has right angles. It is blue.
- b It has no parallel sides. All sides are equal. It is not blue.
- c It has parallel sides, right angles and all sides are equal.
- d It has no parallel sides. It has a right angle. It is blue.

2 Write a description for these shapes.



3 On which branch will these shapes finish?



Statement: *Only in quadrilaterals which are rectangles will the second diagonal bisect the first diagonal into two equal parts.*

True or false? Investigate.